

# Maximize Your AI Potential with R Systems' MLOps Service

---



# Maximize Your AI Potential with R Systems' MLOps Service

R Systems' expert team will help you stay ahead in the digital race with our Machine Learning Operations (MLOps) service, guiding you through every step and streamlining your journey from development to deployment and maintenance.



**This MLOps service is designed to simplify and accelerate the end-to-end machine learning lifecycle.**

It offers a comprehensive solution that ensures your ML initiatives are launched quickly and managed effectively.

By automating critical processes and providing a robust infrastructure for ML model deployment, R Systems enables your organization to bring solutions to market faster, maintain peak performance, and ensure seamless collaboration across your teams.

## AI Build & Deploy Service Benefits

R Systems encourages clients to make informed decisions about their ML initiatives and the potential impact on business outcomes.

### SIMPLIFY MODEL DEPLOYMENT

by reducing complexity and resource demands, enabling faster and more efficient production of multiple models.

### ENHANCE MONITORING AND MANAGEMENT

to ensure deployed models perform reliably, especially when processing large-scale, real-time data.

### ACHIEVE SEAMLESS SCALABILITY

by ensuring your infrastructure can effortlessly handle the growing number of models and their usage without compromising performance.

AWS

**Advanced Partner**  
for digital transformation

**ELIGIBLE FOR**  
MAP Funding

DEEP EXPERTISE IN  
**AI/ML & Analytics**  
technologies

AWS

**Cloud/DevOps**  
migration competencies

DELIVERED

**200 + Projects**  
globally on AWS

AWS

**150+ Experts**  
certified globally

CREATE, MIGRATE & DELIVER

**AWS-Powered**  
scalable applications

## Why Choose Our MLOps?



### Expert Guidance

in ML Strategy and Implementation



### Accelerated Time-to-Market

for ML Solutions



### Comprehensive MLOps Service

for End-to-End ML Lifecycle Management



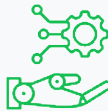
### Streamlined ML Model

Deployment, Monitoring, and Proactive Maintenance



### Scalable ML Infrastructure

with AWS SageMaker Integration



### Automated ML Workflow Management

with AWS API Gateway and Lambda



### Robust Data Management

for ML with AWS S3 and EFS Integration

# System Design and High-Level Implementation Framework

Our MLOps service is designed to tackle key ML development and deployment challenges through a comprehensive, automated framework. We focus on enhancing your ML lifecycle from development to deployment and monitoring.

- **STREAMLINE AND AUTOMATE** model deployment using AWS SageMaker, which offers efficient, auto-scaling capabilities with built-in monitoring and management, ensuring quick and reliable model availability.
- **SEAMLESS SCALING** of AI models through AWS SageMaker's cloud-native services, effortlessly accommodating complex data sets and expanding workloads.
- **CONTINUOUS AI MONITORING** with AWS CloudWatch, enabling proactive maintenance by tracking key performance metrics like latency, error rates, and resource utilization, ensuring quick resolution of any issues.
- **UNIFIED AUTOMATION PLATFORM** using AWS API Gateway and AWS Lambda to automate workflows for model updates, scaling, and rollbacks, minimizing the need for human intervention.
- **ROBUST DATA MANAGEMENT** leveraging Amazon S3 and Amazon EFS, providing scalable, secure storage solutions that integrate seamlessly with other AWS services for efficient model training and deployment.

# Know R Systems

---

R Systems is a leading digital product engineering company that designs and develops chip-to-cloud software products, platforms, and digital experiences, serving high-tech industries like ISVs, SaaS, and more. With expertise in Cloud, Data, AI, and CX, we utilize automation and integration, including RPA and No-Code-Low-Code platforms, to help businesses achieve their objectives. We have constantly innovated over three decades through applied R&D to solve real-life problems. With a workforce of over 4100+, we operate from 18 development centers and maintain a presence in 25 offices spanning North America, Europe, and the Asia Pacific region.

© 2024 R Systems. All rights reserved.

This document and its contents are the property of R Systems. Unauthorized reproduction or distribution of any part of this document is prohibited.

## Contact Us

For more information about our solutions or to discuss how we can help your business, please contact us at:

[marketing@rsystems.com](mailto:marketing@rsystems.com)  
[www.rsystems.com](http://www.rsystems.com)